



CENTRON

AccuMix[™] **CM745**

BLOOD COLLECTION MIXER

Centron

Smart Solutions for Smarter Bloodbanking



Smart blood collection for everyone

*AccuMix*TM CM745

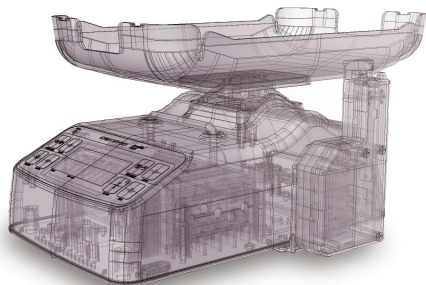
BLOOD COLLECTION MIXER

■ Features

- Perfect cost-efficient solution
- Proven accurate weighing and mixing technology
- Simple weight calibration in digital method
- Large capacity Li-ion battery for portable use
- Emergency onboard battery
- Visual/audible alarms
- Barcode scanner for label checking
- Canvas carrying bag

Refined simplicity meets robustness

- Just plug-in, switch-on and you're ready to go.
- Understanding user work flow and demands, CM745 has intuitive user interface and easy-to-follow set up menus.
- Our reliable weighing and mixing mechanism are protected by solid engineering grade plastic featuring enhanced shock resistance and long-lasting durability. Compact size based on optimized weight distribution makes CM745 the perfect fit for anywhere.



Interchangeable clamping module

- Clamping module clamps blood bag tubing when collected blood volume reaches user-selected preset volume. Also clamping module is detachable, so this can be mounted either left or right for user convenience.



Clear LCD Screen & Target Volume Display

- Ergonomically located LCD is backlit and easy to read in bright indoor. LCD screen displays collected blood volume, preset volume to collect, total weight of collected blood and blood bags, elapsed time of donation and alarm symbols.
- Target volume display shows preset target volume.



Adjustable operational parameters & various visual/audible alarms

- Collection target volume, alarm triggering criteria, beep sound on/off and tray rocking speed are user adjustable.
- Alarm lamp flashing is visible from a distance.



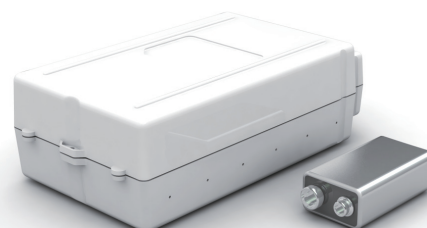
Barcode scanner

- Barcode scanner for label checking
- Barcode scanner reads most standard barcode labels including blood bank-specified ISBT128 code.



Dual Battery System

- Onboard battery (rechargeable) is for emergency backup. In case of unexpected AC power failure, it guarantees supplying power for 20 more minutes to safely complete ongoing collection. No need to use BL101 battery pack all the time in case of AC powered indoor use.
- For portable or outdoor use, newly designed Li-ion large capacity BL101 battery pack (rechargeable & replaceable) is available. BL101 battery pack supports up to 15 hours of operation without AC mains.
- BL101 battery pack is charged in the main unit or in the BC110/BC165 battery chargers.





CENTRON

AccuMix™ CM745

BLOOD COLLECTION MIXER

Optional Chart

	Selective Item	Note
Optional items	• BL101 battery pack	• Large capacity Li-ion battery (rechargeable & replaceable) supports up to 15 hours of operation
	• BC110/BC165 battery chargers	• For charging 1 or 6 BL101 battery packs
	• Barcode scanner	• For label checking
	• Canvas carrying bag	• Light weight durable canvas bag for transportation and storage
	• Carrying case	• Hard case for transportation and storage
	• Large tray	• supports all types of blood bag in the market
	• Sample tube holder	• Holds up to 2 sample tubes / Detachable & interchangeable
	• 500g weight	• Precise standard weight for weight calibration

※ For more information about the product and package customization, please visit our website.

Specification

Product	Blood Collection Mixer
Model	CM745
Power	18V \sim 1.67A + \oplus \ominus
Adapter	100-240V \sim 50/60Hz 1.5A
Dimension	190(W)mm/290(L)mm/158(H)mm

Information



DISTRIBUTOR

Centron Centron Corporation

Address: 44 Beolmal-ro, Dongan-gu, Anyang, Gyeonggi-do,
Postal Code 14059 / Republic of Korea
Phone: +82-31-422-7890 / **Fax:** +82-31-422-7866
E-mail: info@centrons.com
Website: www.centrons.com



※ The specification and design are subject to change without prior notice for product upgrades.